



DOUBLE D ELECTRONICS LTD

DDA296 Remote controlled RF Switch

- * 10/100BaseT Network port
- * Panel-mount enclosure
- * Internal Coaxial Switches
- * HPA interfaces (option)
- * Serial interfaces (option)
- * Remote monitoring & Control
- * SNMP, TCPIP 'Sockets' interfaces
- * Compatible with DDA289, DDA286 etc
- * 24-30V d.c. supply



The DDA296 is intended for the smaller coaxial switch control applications where rack mounting (and a local display) is inappropriate, and can be provided in a variety of configurations.

The most common use is to provide remote control of one or more internal coaxial switches; many other configurations are possible.

Construction

The unit is usually supplied in a panel-mounting case; details of a typical case are given at the end of this data sheet. Other packaging is available on request.

Power Supply

Single feed, 24-30V d.c. on 3-pin XLR connector. Typically less than 200mA quiescent, up to 1A switching (coaxial switches).

Other options

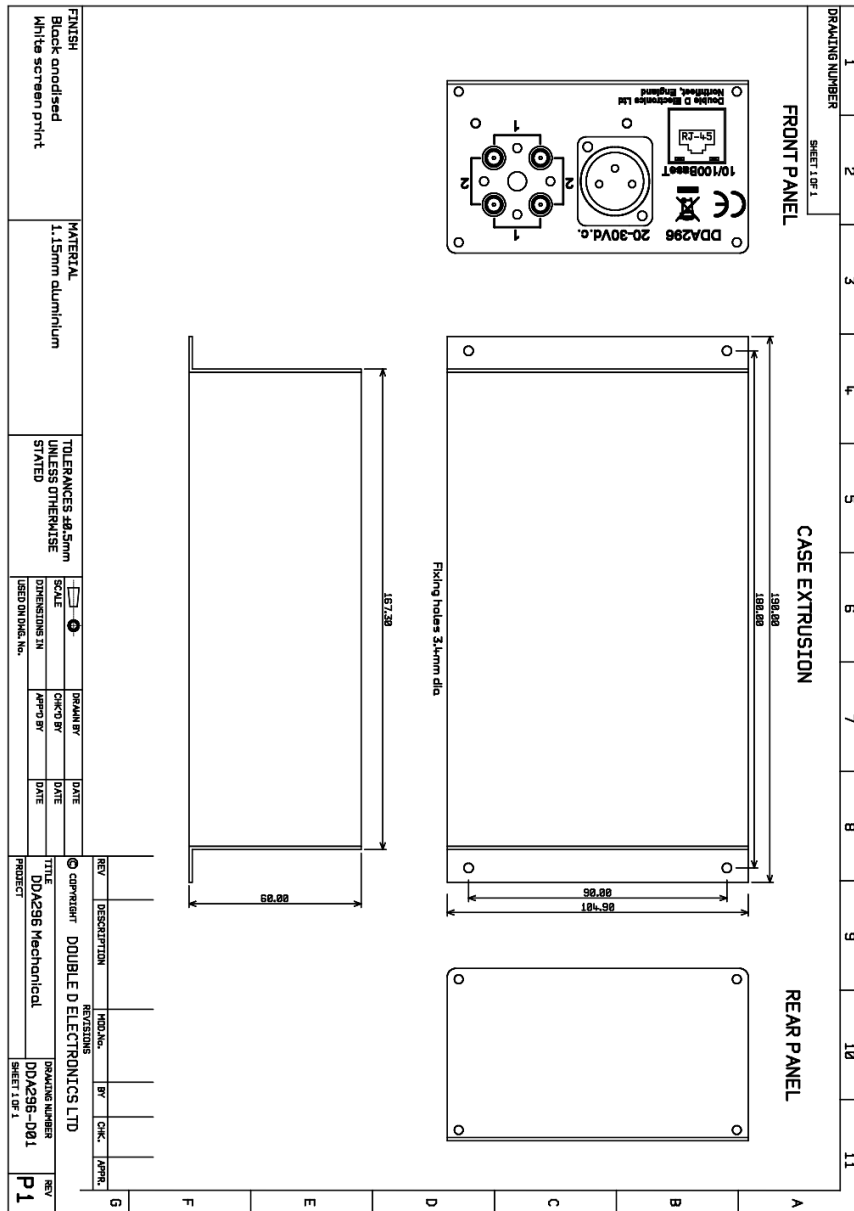
The following list is not exhaustive; please consult the factory for other requirements:

- Alternative enclosures
- Waveguide Switch control interfaces
- HPA/equipment interfaces
- General-purpose I/O

Ordering Information

Part No	Switch type	Qty	Case Size
DDA296-18	18GHz, SMA transfer switch	1	A
DDA296-40	40 GHz, SMA 2.92mm transfer switch	1	A

Please consult factory for other requirements



Case Size A

Double D Electronics Ltd
Unit 6, Robins Wharf
Grove Road
Northfleet
Kent DA11 9AX

Tel: +44 (0) 1474 333456
Fax: +44 (0) 1474 333414

email: sales@ddelec.co.uk

1/280319